

## Practice Materials #182

"Use These 3 Scales to Shred on Any Modal Tune"

**A** D minor Pentatonic Scale



**A1** 4 Improve using the Dm Pentatonic Scale



**B** 8 Em Pentatonic Scale



**B1** 11 Improve using the Em Pentatonic Scale



**B2** 15 Improve using the Dm & Em Pentatonic Scales "Are we shredding yet?!"

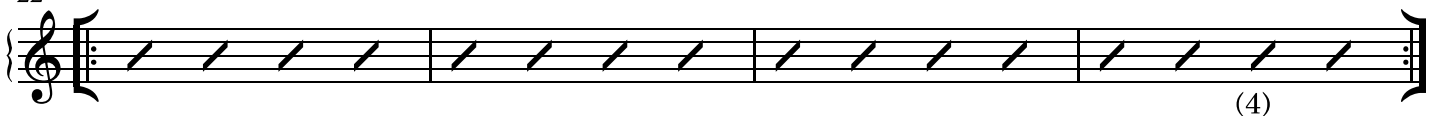


**C** 19 Am Pentatonic Scale

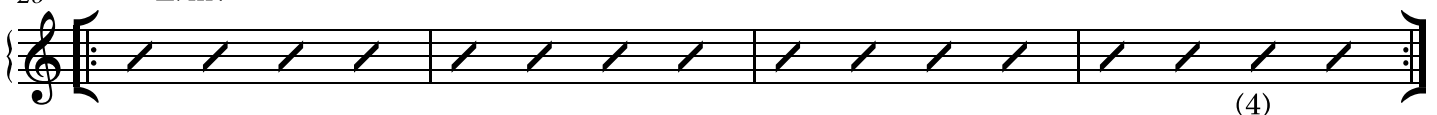


**C1** 22 Dm7 Improve using the Dm, Em, Am Pentatonic Scales

"Now we're shredding!"



**C2** 26 Ebm7 Now try in Eb minor! What scales? Think up a half step! (Ebm, Fm, Bbm)



(MED. JAZZ)

# SO WHAT

399.  
- MILES DAVIS

Handwritten musical notation for the first system. The top staff is in treble clef with a key signature of one flat (Bb) and a 4/4 time signature. The bottom staff is in bass clef. A handwritten note "(BASS LINE ONLY)" is written above the bass staff. A double bar line with a repeat sign is present. Chord annotations include "D-7 (DORIAN)" written above the first measure after the repeat sign.

Handwritten musical notation for the second system, continuing the melody and bass line from the first system.

Handwritten musical notation for the third system. It includes first and second endings, marked with "1." and "2." above the staff.

Handwritten musical notation for the fourth system. Chord annotations include "Eb-7 (DOR.)" written above the staff.

Handwritten musical notation for the fifth system. The notation concludes with the instruction "D.S. al f" written below the staff.

Handwritten musical notation for the sixth system, which serves as a chord chart. It begins with a treble clef and a key signature of one flat. The text "SOLOS ON ENTIRE FORM:" is written above the staff. The chord progression is shown as: D-7 | Eb-7 | D-7. The bass line for each chord is indicated by a circle with a letter inside: 16 for D-7, 0 for Eb-7, and 0 for D-7.