

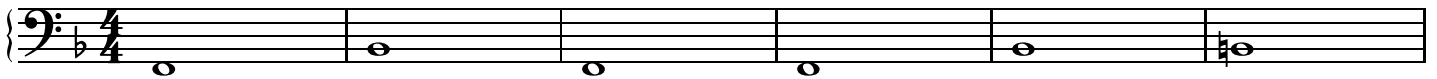
Practice Materials #188

"Walking the Blues Away - How to Play Bass Lines and Improvise"

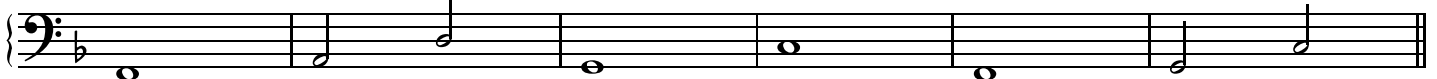
1

Whole notes - "F blues"

F7 Bb7 F7 Bb7 Bdim7



7 F7 Am7 D7 Gm7 C7 F7 Gm7 C7



2

Half notes - "F blues"

13 F7 Bb7 F7 Bb7 Bdim7



19 F7 Am7 D7 Gm7 C7 F7 Gm7 C7



3a

Bassline Pattern 1 - "walk-up"

25 F7 Bb7 Gm7 C7



3b

Bassline Pattern 2 - "chromatic walk-up"

29



4a

Bassline Pattern 3 - "walk-down"

33 F7 Bb7 Gm7 C7



2

4b

Bassline Pattern 4 - "down-up"

37 F7 Bb7 Gm7 C7

5a

Bassline Pattern 5 - "half step approach (down)"

41 F7 Bb7 Gm7 C7

5b

Bassline Pattern 6 - "half step approach (up)"

46 F7 Bb7 Gm7 C7

6

Bassline Pattern 7 - "double half-step"

51 Gm7 C7 F7 Am7 D7 Gm7 C7 F7

Ex. 1

Play LH Whole Notes, then half notes; improvise in RH!

56 F7 Bb7 F7

(4)

60 Bb7 Bdim7 F7 Am7 D7

(8)

64 Gm7 C7 F7 Gm7 C7

(12)

Ex. 2

Play LH "two-feel", improvise in RH!

68 F7 Bb7 F7

(4)

72 Bb7 Bdim7 F7 Am7 D7

(8)

76 Gm7 C7 F7 Gm7 C7

(12)

Ex. 3

Walk the blues in LH, improvise in RH!

80 F7 Bb7 F7

(4)

84 Bb7 Bdim7 F7 Am7 D7

(8)

88 Gm7 C7 F7 Gm7 C7

(12)

Next, try with your favorite standard! ("A Foggy Day," "It Could Happen to You," etc.)